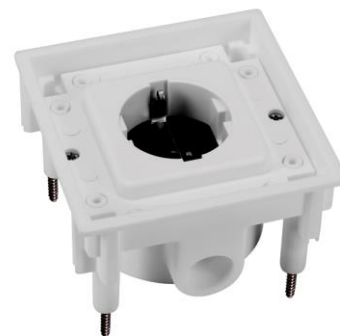


Socket outlet SCHUKO

1471601




General information

Item number	1471601
Model	Socket outlet
Colour	grey

Electrical parameters

Amperage	16A
Voltage	250V
Poles	2P + PE

Standards/Directives

According to	DIN VDE 0620
Standard	SCHUKO
Certification marks	

Operating conditions

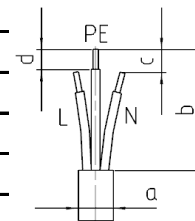
Storage temperature	-25°C to +70°C
Operating temperature	-25°C to +40°C
Relative humidity	5 to 95%, no condensation
Degree of protection	IP20

Materials

Contact Carrier	PA
Housing	Thermoplast

Connecting cable

Cross section	3x1,5mm ² -3x2,5mm ²
Cable diameter, dimension a	-
Insulation strip length sheath, dimension b	min. 20mm
Trim L/N, dimension c	0mm
Insulation strip length cores, dimension d	8-10mm



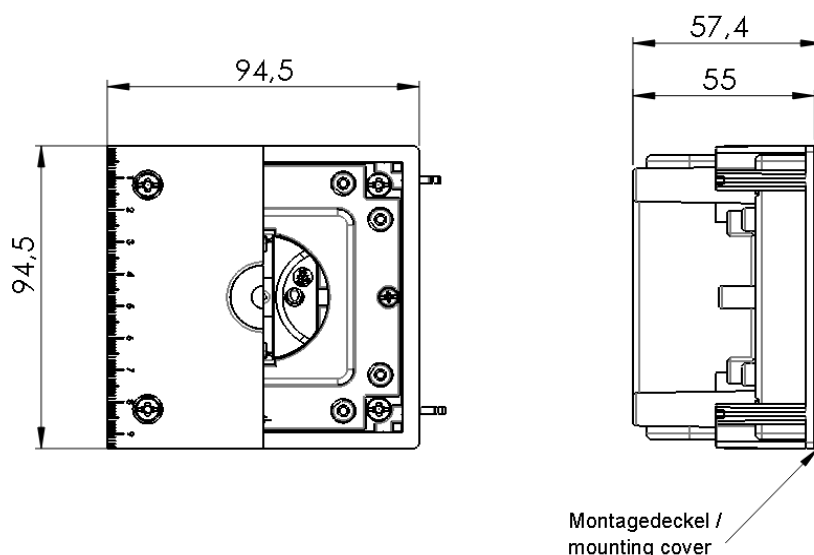
Connection screws

Max. torque for screws L-N/PE	0,5 Nm
Screw drive L-N/PE	Combined slot/PZ1
Max. torque for screws housing	0,6/1 Nm
Screw drive housing	Combined slot/PZ1

Additional technical information

Note	Lower part made of thermoplastic with 2x M20. Includes spirit level.
------	---

Subject to modifications



If the application requires extended specifications, we recommend to test the application under real or simulated conditions. Parameters like duration, quantity and temperature will effect the result significantly